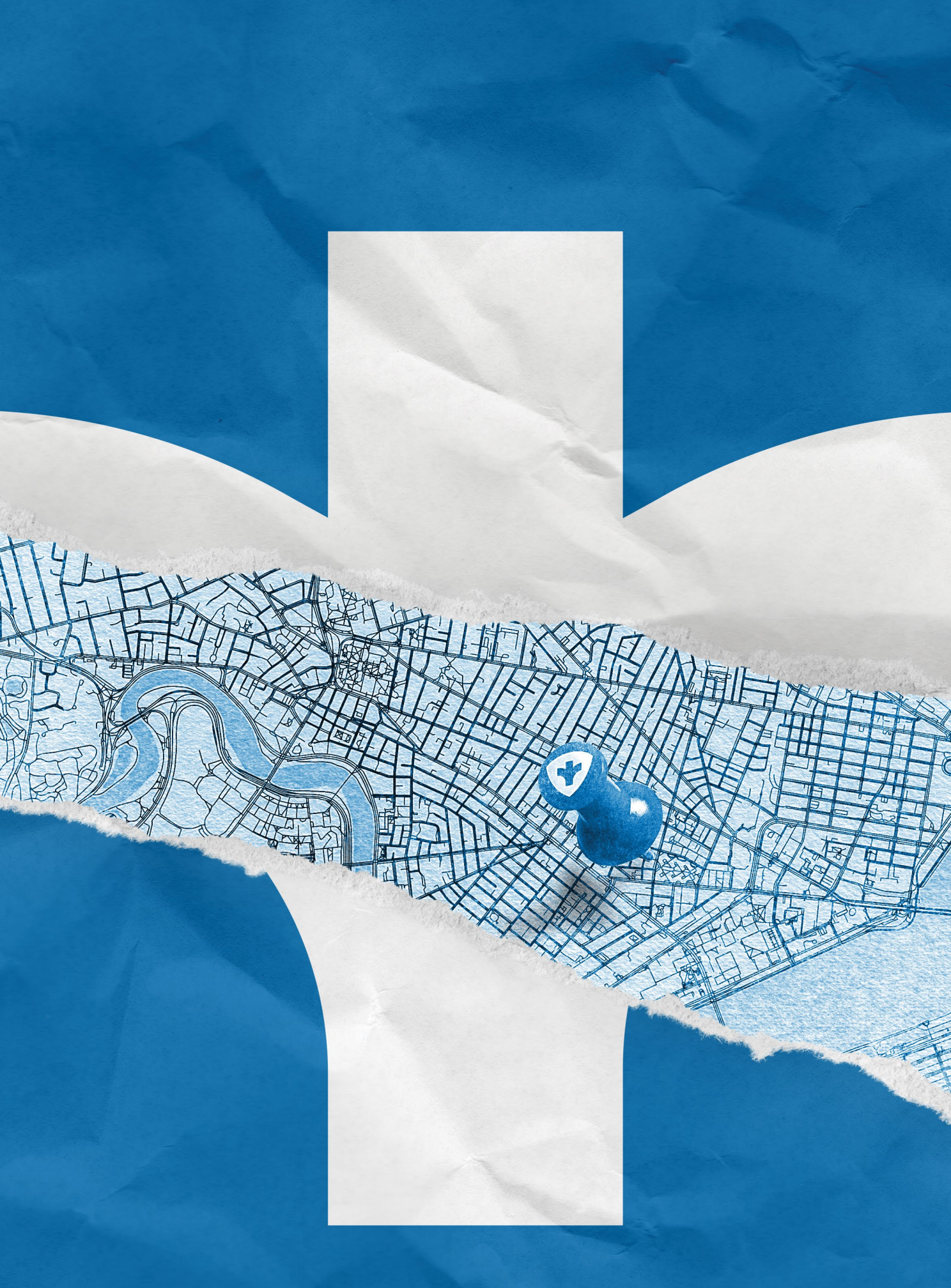


FISCAL YEAR 2024 ANNUAL REPORT



Cambridge
Public Health
Department





Contents

CAMBRIDGE PUBLIC HEALTH DEPARTMENT

FY24 ANNUAL REPORT

4

Public health
leadership messages

6

Who we are

18

Community Health
Improvement Plan

20

Financial summary

21

Thank you to
our partners

22

Acknowledgments



8 *Our*work

In this section, we provide an overview of the activities and initiatives undertaken by the Cambridge Public Health Department (CPHD) on behalf of the Cambridge community during FY24.

Derrick Neal

CHIEF PUBLIC HEALTH OFFICER



Hello, Cambridge community.

I OFTEN SAY that just about **everything** is public health. Reflecting on the past year, I stand firmly by that sentiment!

FY24 was an active and productive one for the Cambridge Public Health Department, guided by our newly-minted strategic plan. With the pandemic receding further into the background, staff embraced the ability to offer programming in the community, jump-start new initiatives, and think about our future direction. We have embraced CHA's Anti-Racism Statement as a beacon for our work, committing to foster a culture across the department that is diverse, equitable, inclusive, and anti-racist for staff and members of the communities that we serve.

Summer brought activities related to literacy, nutrition, and community engagement. In August, we remembered individuals lost to overdoses and promoted naloxone training for the community. In a fall highlight, CPHD hosted experts from the Centers for Disease Control and Prevention (CDC) and state health department, showcasing the work of our Tuberculosis (TB) treatment team. We also worked with the Cambridge Fire Department to offer first-aid training to city staff.

After the Cambridge City Council amended the zoning ordinance in November to allow henkeeping in the city, CPHD promulgated regulations that prescribed measures to maintain the health of both hens and residents. We subsequently added henkeeping to the list of permits for which we are responsible. Also that month, the clinical team responded to the threat of varicella in a family shelter, successfully limiting its spread.

CPHD celebrated a milestone in February when we submitted an enormous documentation package to the Public Health Accreditation Board (PHAB) seeking re-accreditation for the next five years. That process will continue with a site visit in the coming fiscal year. We also kicked off a new Community Health Needs Assessment, convening partners to help identify the most pressing health needs of the community.

April was action-packed. To commemorate National Public Health Week, the Mayor honored CPHD at a reception at City Hall. We were excited to host Real World Public Health again after a pandemic-induced hiatus, inviting area university students to learn about public health practice at the local level.

As FY24 drew to a close, Dr. Lisa Dobberteen readied for retirement as CPHD's Medical Director and School Health Physician. The city recognized Dr. Dobberteen with the prestigious Brian Murphy Award for Leadership. CPHD staff acknowledged her many years of dedicated service and prepared to welcome new clinical leadership, Drs. Linda Ship-ton and Sam Cohen.

In the following pages, you'll learn about our work in oral health, emergency preparedness, epidemiology, school health, regulatory oversight, and more. I hope you'll stay in touch.

Yours in public health,

A handwritten signature in blue ink that reads "Derrick L. Neal".

Derrick Neal

Assaad J. Sayah, MD

**CEO, CAMBRIDGE HEALTH ALLIANCE
PUBLIC HEALTH COMMISSIONER**



Greetings,

HERE AT CHA, we continue to pursue our vision of equity and excellence for everyone, every time. I was very proud of our accomplishments in FY24. Among other achievements, CHA was:

- honored for Surgical Quality by the American College of Surgeons;
- ranked as the number one hospital in Massachusetts for Community Benefit by the Lown Institute;
- named to Newsweek's list of Best Maternity Hospitals;
- named a Best-in-State Employer by Forbes; and
- named One of America's Greatest Workplaces for Diversity for 2024 by Newsweek.

While excellence as a service provider and an employer is fundamental to who we are, equally important is our commitment to the communities we serve. CHA's identity as a safety net hospital continues to motivate and inspire staff across the organization.

CHA's community focus extends across a wide range of population health, public health, and community health programs and initiatives.

- CHA's Community Health Worker (CHW) program trains and supports community volunteers who are culturally and linguistically diverse to bring health information to underserved and hard-to-reach populations.
- CHA's Health Improvement Team works collaboratively with partners to assess community health status and provide leadership around health issues that impact the community.

- The CHA Revere Care Center's Mobile Market provides fresh produce and other staples to families facing food insecurity.
- CHA's advanced multilingual interpreter programs support our many patients (44%) who speak a language other than English.

The Cambridge Public Health Department focuses on the health of the entire population of Cambridge, with a special focus on more vulnerable groups within the city. CPHD's work at the municipal level mirrors CHA's efforts across our regional service area, and we are aligned in our commitment to addressing the health of our communities.

Work as a safety net hospital is financially challenging, and we are not immune to the fiscal hardships faced by healthcare organizations across the country. CHA is actively identifying ways to modify our operations to thrive in the current economic climate and chart a successful path forward. I appreciate the many contributions of staff in this process and am confident in our ability to grow our system to meet the needs of the communities we serve. I would like to thank all the employees at CHA and CPHD for their dedicated work this fiscal year.

Sincerely,

Assaad J. Sayah, MD



Public health is about protecting the health of an *entire* population.

For us, that means all people who live, learn, work, play, or spend time in Cambridge. The Cambridge Public Health Department provides services, analyzes and shares information, implements policies, and enforces regulations in ways that support healthier lives and benefit everyone in our diverse community.

CPHD staff welcomed local university students to a Real World Public Health event in April.

WE KNOW THAT better health for everyone begins with challenging beliefs and structures that perpetuate inequality, discrimination, and racism. That's why working with partners to address the social determinants of health and improve access to nutritious foods, language and literacy skills, safe housing, healthcare, and other vital resources is fundamental to our approach. We're committed to protecting the public's health and improving quality of life for everyone in our community.

VISION

The Cambridge Public Health Department is a leading, innovative, and model agency that facilitates optimal health and well-being for all who live, learn, work, and play in Cambridge.

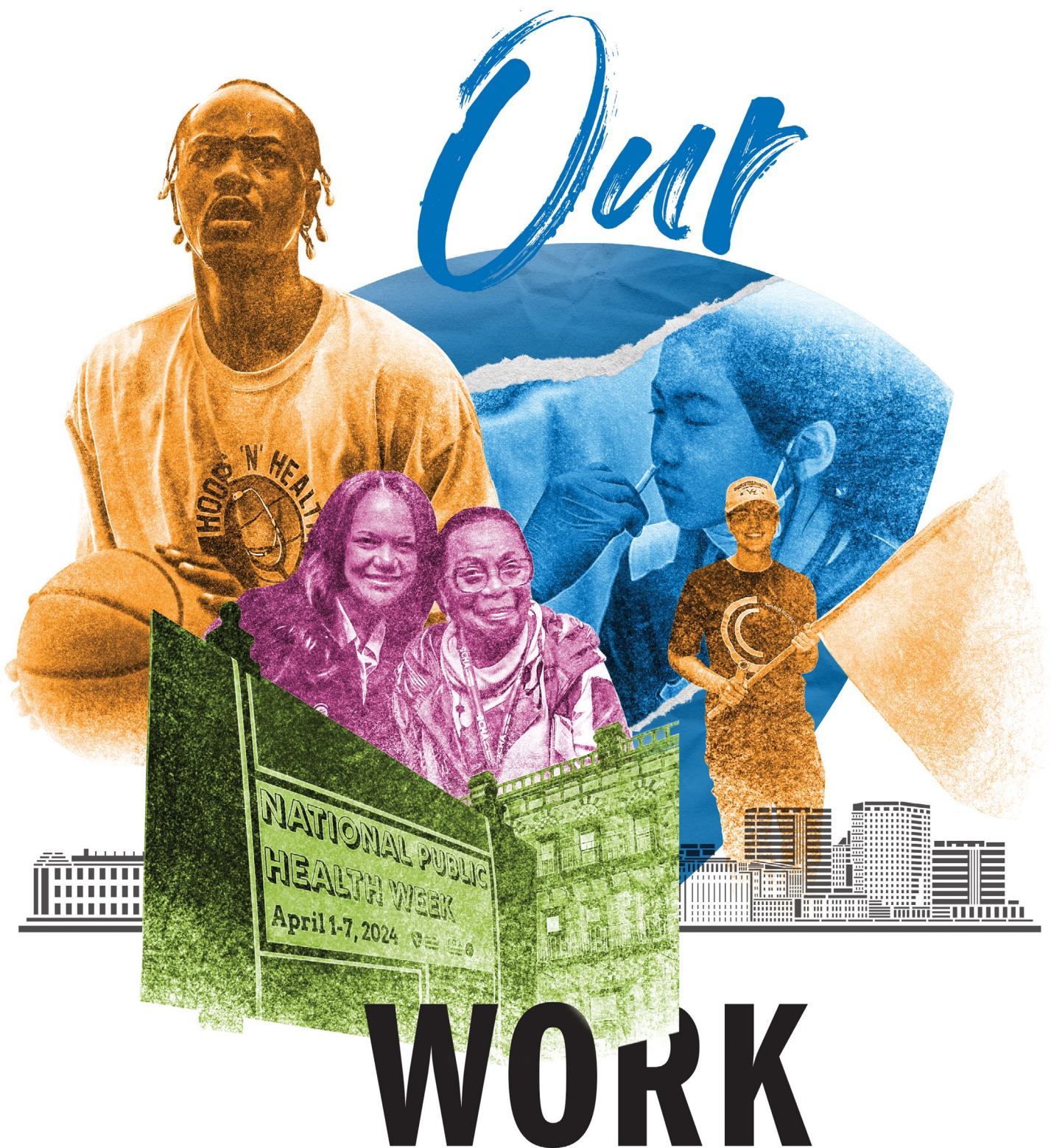
MISSION

The Cambridge Public Health Department improves the quality of life for all who live, learn, work, and play in the city by preventing illness and injury; encouraging healthy behaviors; and ensuring safe and healthy environments.

VALUES

Collaboration
Innovation
Professionalism and Excellence
Social Justice and Equity





Welcome to the *work* section of the Cambridge Public Health Department (CPHD).

The following provides an overview of CPHD's many units, programs, and services during FY24. Learn more about CPHD's work at CambridgePublicHealth.org. Happy reading!

PUBLIC HEALTH NURSING

PUBLIC HEALTH NURSING staff focus on disease investigation and prevention and tuberculosis (TB) prevention and control. In FY24, nursing staff investigated 189 communicable diseases and foodborne illness cases.

The Public Health Nursing staff worked closely together with the Epidemiology and Data Services unit when responding to communicable diseases throughout Cambridge. For example, the units responded to a case of varicella-zoster virus (chickenpox) in an individual who had spent time at a local shelter by setting up a clinic to provide varicella vaccine to anyone (residents and staff) who may have been exposed. In another situation, clinical staff provided antibiotics to individu-

als who may have been exposed to meningitis.

Public Health Nurses also organized and ran CPHD's vaccine clinics. During FY24, the team held 19 vaccine clinics over 13 clinic days, operating in large public sites, schools, elderly housing buildings, and shelters and meals programs. Over the course of these clinics, CPHD's public health nurses and school nurses, assisted by partners from the Cambridge Fire Department, administered 1,830 COVID-19 vaccines, 1,840 flu vaccines, and 128 other routine vaccinations.

Managing TB cases is a major focus of the work of CPHD's public health nurses. CPHD operates a large TB program at CHA Cambridge Hospital. Public health nurses perform a case management role, overseeing TB care for residents of Cambridge and surrounding communities who have active or suspect TB, including home visits for directly-observed therapy.

During FY24, CPHD public health nurses and CHA physicians managed 1,421 visits from patients with latent or active TB. Some of the Public Health Nursing staff also attended the New England TB Clinical Conference held in June 2024.

EPIDEMIOLOGY AND DATA SERVICES

THE EPIDEMIOLOGY AND Data Services (Epi) unit continued its work to monitor communicable diseases in Cambridge and provide data collection and analysis support for CPHD's programs and initiatives.

The Epi team worked closely with the Public Health Nurses and other clinical staff. During FY24, the unit monitored 189 cases of diseases, which included foodborne illnesses, respiratory illnesses, and tick-borne illnesses.

CPHD nurses staffed vaccine clinics and worked with residents in the community and the schools.



Over the course of the fiscal year, the team developed a new workflow tracker to help improve communicable disease monitoring and case management, leading to 94% of cases receiving outreach within two business days.

The Epi unit supported Public Health Nursing staff with their TB program by developing a TB report to help with clinic operations. In addition, the Director of Epidemiology and Data Services attended a TB training and conference to better inform work surrounding TB.

Epi staff developed a new blood pressure screening collection tool that was used by both School and Public Health Nurses at the Hoops 'N' Health event. They also collaborated with other CPHD units on such projects as improving the data collection system for the Cambridge Healthy Smiles Program, maintaining the data system for opioid overdoses used by the Mental and Behavioral Health Promotion unit, and evaluating the Health Promotion Mini-Grants Program.

The Director coordinated CPHD's vaccine clinic planning and operations and managed vaccine data collection throughout the fiscal year. This included overseeing offsite logistics for a vaccine clinic held for newly-arrived immigrant students and families. During this clinic, over 55 individuals received a variety of vaccines including TDap (tetanus, diphtheria, and pertussis), Hepatitis B, MMRV (measles, mumps, rubella, and varicella), polio, COVID-19, and flu.

Epi staff played an active role in CPHD Committees. As a member of the Ethics Committee, the Program Planning and Evaluation Specialist was part of the team that presented an ethics case to high school students attending a program at the Public Health Museum in Massachusetts.

The Specialist also manages and supports the work of the Teen Health Survey (below).

fy emerging issues, and plan and evaluate programs.

Survey design for the 2024 THS started in late summer 2023 with regular meetings between CPHD and CPS staff. The team reviewed all survey questions, tailoring them to reflect the current student experience and emerging needs. The survey instrument was finalized and approved in winter 2024. In late winter, CPHD staff held office



2024 TEEN HEALTH SURVEY

IN COLLABORATION WITH Cambridge Public Schools (CPS), the health department conducts a survey of youth health, the Teen Health Survey (THS). THS asks upper grade and high school students questions about their health-related behaviors and experiences. It is adapted from the most recent Centers for Disease Control and Prevention (CDC) Youth Risk Behavior Survey and Massachusetts Youth Health Survey. THS has been administered bi-annually to high school students since 1992 and to upper grade students since 1997. Information from this survey is used to monitor health trends, identi-

hours for caregivers of CPS students to review the survey and ask questions.

In April and May 2024, the survey was administered to all CPS students in grades 6-12. A total of 1,102 upper grades students responded in the voluntary survey, representing a 83% response rate. For the high school, 1,512 students (77%) responded.

The report was finalized and shared with the School Committee in late fall 2024 and then with city and community partners and the public.

Students from Cambridge Rindge and Latin School participated in the Teen Health Survey.

COVID-19 CASE INVESTIGATION AND CONTACT TRACING

THE CAMBRIDGE CHELSEA Revere and Winthrop Case Investigation Team contacted nearly 4,000 residents across their four municipalities via phone and text to offer support to residents with COVID-19 and other communicable diseases. The team coordinated with the Cambridge Community Corps to deliver COVID-19 tests and masks to Cambridge cases and worked with other local groups in partnering cities. Staff provided referrals for treatment, primary care, and a range of other services. In FY24, 15% of the residents contacted were found by the team to have additional needs and were connected to a community or internal resource.

Starting in 2024, the investigation team helped families living in the emergency family shelter in Cambridge connect with vaccination and primary care services at CHA. The team worked closely with school health staff to support children who were not yet up to date on their vaccines and to ensure easy access to primary care as needed.

The work of the investigation team was made possible by a grant through the Massachusetts Department of Public Health and the Metropolitan Area Planning Council.

CPHD staff, including Literacy Ambassadors, distributed thousands of books to promote early literacy.

POPULATION HEALTH INITIATIVES (PHI)

THE PHI DIVISION promotes healthy behaviors in the Cambridge community. Staff work with residents and partner organizations to identify the health needs of communities in Cambridge and develop programs and policies to address those needs.

The current PHI units are Early Literature, Healthy Eating and Active Living, and Mental and Behavioral Health Promotion. Below are some FY24 highlights from each unit.

Early Literacy

The Agenda for Children Literacy Initiative features three programs: Let's Talk!, Cambridge Dads, and Pathways to Family Success. All three programs held in-person and virtual activities that promote early literacy, parent-child connection, parent and caregiver support, and connection to community resources.

- Let's Talk! helps children develop early literacy skills by educating and supporting parents and caregivers. Activities during FY24 included literacy home visits, parent-child playgroups, Born to Read packets sent to newborns, weekly text-a-tip, and a family child care support group. Staff gave out children's books at Let's Talk activities and at community events—this year over 9,600 books were distributed!

Let's Talk!, along with their partners, hosted 19 Book Bike events and placed eight StoryWalks throughout city parks for the summer. They held workshops for parents, including the series, "Raising Children with Black Joy." For Family Literacy Month, the team and their partners held their 24th annual Family Literacy Fun Day at City Hall on November 4 for Cambridge families with children birth to 8 years old.



- Cambridge Dads, which supports dads in their role as parents, held events designed for fathers only as well as events for dads and their children. Events included monthly Dads & Kids at the Gym, basketball for dads, and a new Dad & Kids Game Night. A highlight was the Fatherhood Buzz, where dads and their kids got haircuts, had dinner, and hung out together.
- The Pathways to Family Success program supports low income families with children in Pre-K through 2nd grade. This fiscal year, Pathways recruited a new two-year cohort of families in North Cambridge. The families attended two events per month, including parent workshops, field trips, whole-family activities, and book giveaways.

Healthy Eating and Active Living (HEAL)

The HEAL unit continued to promote food security and active living in FY24. This included providing resources and information on physical activity, food pantries, free meal programs, farmers markets, and government nutrition benefit programs.

HEAL promoted the Cambridge Supplemental Nutrition Assistance Program (SNAP) Match Coalition, which helps SNAP shoppers access fresh, local food by increasing their purchasing power through a match of up to \$15 per visit at participating Cambridge farmers markets. The coalition distributed over \$35,000 in matching funds in FY24. In addition, HEAL



continued to partner with the Cambridge Community Foundation and other community organizations in the Food Access and Security Initiative.

Under the Health Promotion Mini-Grants Program, HEAL awarded \$10,000 to 10 local organizations to develop initiatives that promote healthy eating and/or physical activity. These grants were administered jointly with the Mental and Behavioral Health unit and in partnership with the Sasaki Foundation.

The HEAL Team hosted and participated in many community events. These included a cooking demo with seniors at East End House and attendance at a health fair for Ethiopian seniors at the Cambridge Economic Opportunity Committee. HEAL also helped inform CHA's Hypertension Signature Initiative, participating in CHA's hypertension summit in June 2024, where HEAL joined other CPHD and CHA staff to discuss ways to improve educational awareness and outreach for various vulnerable populations.

Mental and Behavioral Health Promotion Unit

The Mental and Behavioral Health Promotion Unit provides mental health and substance use prevention support. Partner-

ships are central to these efforts. FY24, the program awarded \$10,000 in mini-grants to five nonprofit partners to offer new and creative approaches for supporting youth mental health and wellness in the community.

The team's staff partnered with the YWCA, Cambridge Public Schools, Cambridge Community Center, and the Family Policy Council to host a breakfast for 40 social workers from around Cambridge to network and share resources. The unit also worked with the Communications and Marketing division to design bus ads that promoted the local Community Behavioral Health Center (CBHC) at CHA Cambridge Hospital. The CBHC is an important community resource that provides urgent care for mental health and substance use disorders.

The unit undertook a number of initiatives to promote youth wellness, including soliciting community feedback on strategic planning, grant work, and community assets. This

The Prevention and Recovery Specialist served as a panelist in the discussion called, "Objects of Addiction: Perspectives on the Opioid Crisis in New England" held at the Harvard Art Museums.

resulted in the development of a full strategic plan that will be implemented in coming years. In an effort to engage youth more intentionally, the unit piloted a youth group at a local charter school, which included a photography project for teens to document the messages they receive about substance use. The unit also conducted four Youth Mental Health First Aid trainings and a pilot of the in-house Teen Mental Health 101 training for community partners and parents/caregivers.

On the substance use front, the unit provided 26 Overdose Prevention trainings to individuals, businesses, and organizations in Cambridge and held six Narcan Distribution Events. One of these narcan sessions was covered by cartoonist Sage Stossel who later published her cartoon in *The Boston Globe*.

Staff held two Medication Takeback events in collaboration with Cambridge Police Department and the Council on Aging, giving residents an opportunity to safely dispose of their unwanted

medications. Over 300 pounds of medications were surrendered. To help inform recommendations for use of opioid abatement funds being received by the city, staff also solicited feedback from people with lived and living experience with substance use.

ENVIRONMENTAL HEALTH

DURING FY24, THE Environmental Health (EH) unit tackled a wide range of topics. The team collaborated with the Inspectional Services Department (ISD) to formalize an indoor air quality program that is integrated into ISD housing code enforcement. These assessments include evaluation of factors that affect air quality such as moisture control, bacteria, and mold. Using housing code enforcement authority leads to better outcomes when potentially unhealthy conditions are present. Environmental health also monitored tick-and mosquito-borne diseases, such as West Nile virus, and collaborated with ISD on rodent control efforts.

In an effort to teach the Cambridge Community Corps and staff about tick bite prevention, Environmental Health held two tick hunts in grassy areas in Cambridge in summer 2023 and spring 2024. Both hunts were led by Dr. Sam Telford, a professor and expert in tick-borne diseases from Tufts University, Cummings School of Veterinary Medicine.

In November 2023, the Cambridge City Council amended the city's zoning ordinance to make henkeeping legal in Cambridge. CPHD promulgated the necessary public health regulations and

The EH team performed a range of regulatory duties and issued the following permits in FY24:*

LAB BIOSAFETY

150



TATTOO AND BODY ART

60

practitioner

8

establishment

BODYWORK THERAPY

5

practitioner

2

establishment

BEEKEEPING

4



*Permits submitted but not approved during the fiscal year were not included in these counts.

EH staff developed a henkeeping permitting process. The permit application was launched in the spring, allowing Cambridge residents to request permission to keep hens in the city.

In addition, EH continued its biosafety committees, which include some members from Cambridge's general public. Cambridge is the first city in the world to establish direct citizen oversight of biological research, and remains the standard for strict public oversight of this sector.

COMMISSIONER OF LABORATORY ANIMALS

THE COMMISSIONER OF Laboratory Animals, a licensed veterinarian, reviews the care and use of laboratory animals in Cambridge. The majority of the duties performed by the Commissioner involve permitting, or registering, facilities in the city that fit the definition of a research institution according to Cambridge Municipal Code, as well as inspecting these institutions' animal use programs. The Commissioner also communicates with the Institutional Animal Care and

Use Committee (IACUC) Chair and unaffiliated IACUC members of each institution.

During FY24, 34 institutions were permitted. To support the provision of the most up-to-date information regarding animal welfare improvements, the Commissioner regularly reviews current relevant scientific literature; this year she also attended multiple webinars hosted by federal agencies dedicated to assisting scientists find alternatives to animal use.

In addition to the responsibilities associated with permitting laboratory animal facilities, the Commissioner also performs public health-related duties on behalf of CPHD. These included consultation on zoonotic diseases to staff, such as updates on the Highly Pathogenic Avian influenza viruses (bird flu), as well as providing information regarding the Commissioner role to public officials and businesses in neighboring municipalities.

The Commissioner continued to serve as a co-chair of the CPHD Ethics Committee and participated in conversations regarding humane approaches to pest management as part of the Rodent Task Force.

EQUITY, RESILIENCE AND PREPAREDNESS

THE EQUITY, RESILIENCE and Preparedness Unit continued to play a vital role in emergency preparedness and community resilience in Cambridge.

In June 2024, the unit held the Hoops 'N' Health event at Hoyt Field for the first time since the onset of the COVID-19 pandemic. Over 500 people attended. The event featured a basketball tournament as well as a health fair where both School and Public Health Nurses took blood pressure measurements for attendees. Representatives from other community programs staffed tables and connected with community members. The event is intended to raise awareness of men's health and broader community health.

The unit continued its work on the city's Block Party Initiative, which allows residents to receive \$300 to help fund their block party. Block parties build community, strengthen connections among neighbors, and help combat loneliness within the community. More than \$20,000 was awarded for the block party fund this year. Almost half of this year's block party recipients were first time party hosts.

Staff from the Equity, Resilience and Preparedness and Mental and Behavioral Health Promotion units worked on the Shade is Social Justice program, which supports Cambridge in adapting to global warming by strengthening the city's climate resilience and preparedness.

The Hoops 'N' Health middle school champions celebrated their victory.



This initiative uses the power of art and design to shape perception, stimulate discussion of the challenges, and find innovative solutions.

Through this unit, CPHD and the Cambridge Commission for Persons with Disabilities—with support from the Metropolitan Area Planning Council—received a two-year grant that will allow the departments to centralize conversations on the overall health of Cambridge residents with disabilities and assess the extent to which city policies, programs, services, and facilities support the health of these residents.

The team also engaged in planning for Water, Sanitation and Hygiene (WASH) Emergencies for People Experiencing Homelessness, a grant initiative sponsored by the National Association of County and City Health Officials (NACCHO). The grant focused on developing emergency preparedness plans for individuals experiencing homelessness. Work included gathering feedback from local organizations that work with unhoused populations and a multi-agency tabletop exercise that involved planning care for unhoused individuals during a heatwave.

CAMBRIDGE COMMUNITY CORPS (C3)

THE C3 IS a diverse network of paid ambassadors coordinated by the health department. The goal of C3 is to foster a more resilient and equitable community so that everyone in Cambridge is able to prepare, respond, recover, and thrive in extreme situations and emergencies.

Throughout FY24, C3 undertook its important work of supporting and promoting CPHD and city initiatives and events. In May 2024, C3 hosted its own block party in The Port to publicize the city's Block Party initiative. C3 went door-to-door to promote CPHD's Hoops 'N' Health initiative and vaccine clinics and helped with logistics during these events. Corps members also participated in city events such as Cambridge's Safer Homes, Safety Community Gun Buyback. The C3 also distributed heat safety materials to residents in parks and senior housing on days of extreme heat, advising community members about resources and ways to stay cool.

The C3 continued its coordinated work with the regional case investigation team with

much-needed COVID-19 supplies. The C3 delivered 133 at-home COVID tests and masks to Cambridge households where at least one person was isolating due to COVID.

The C3 participated in many trainings to equip team members with knowledge about issues that affect community residents. Members learned about tick bite prevention and tick-borne diseases in the two tick hunts organized by the Environmental Health unit. In addition, they attended Mental Health First Aid and domestic violence prevention sessions.

SCHOOL HEALTH

CPHD'S SCHOOL HEALTH team is deployed throughout the city in the Cambridge Public Schools (CPS).

School health staff assess immunization status throughout the school year. The immunization coordinator reached out to new families in the district and students entering kindergarten over the summer to ensure that students were up to date on routine vaccines. Staff also worked with immigrant families new to CPS to ensure that students received routine vaccinations and were connected to primary care at CHA.

School nurses administered many of the COVID-19 and flu vaccines at CPHD's vaccine clinics and participated in a clinic that was hosted for newly-arrived children and families living in the emergency family shelter in the community.

C3 members worked on projects throughout Cambridge.



During the 2023-2024 school year, *school* health staff performed:

31,385

STUDENT VISITS

for illness, injury, medication administration,
and medical procedures



1450

SBIRT SESSIONS

(Screening, Brief Intervention,
Referral to Treatment)*

4015

VISION SCREENINGS

and made **339** referrals

3011

HEARING SCREENINGS

and made **73** referrals

1591

POSTURAL SCREENINGS

and made **84** referrals

*A comprehensive approach to find and provide an early intervention to those with substance use disorders or those at risk for disorders. Staff also sat on numerous 504 teams to assist in coordination of care for students with complex medical needs.

CPHD and CPS continued to provide a comprehensive COVID-19 testing program for students and staff. Beyond administering tests, school health staff were integral to CPS infection control teams to determine who could remain in school given COVID protocols.

School health staff participated in two retreats dedicated to conversations on racial equity, structural racism, trauma caused by racism, and how racism is a public health emergency. Staff also attended a Safe Schools Program for LGBTQ Students training, a dental health training led by CPHD's Oral Health Division, and a Youth Mental Health First Aid training.

ORAL HEALTH

THE ORAL HEALTH division's goal is to improve oral health equity within the Cambridge community. The division identifies residents with dental needs, provides oral health resources, and helps residents connect with a dental practice for long-term oral health care. The division works with residents of all ages to provide guidance on how to care for their teeth for a lifetime.

Cambridge Healthy Smiles Outreach Program

During FY24, the Cambridge Healthy Smiles program expanded to include a community outreach component. Community Health Dental Hygienists held

educational oral health sessions and distributed over 200 oral hygiene bags. Participants included seniors, those experiencing homelessness, pregnant/new mothers, and other underserved populations. The division plans to expand their outreach efforts.

Cambridge Healthy Smiles Children's Program

The Cambridge Healthy Smiles Children's program reaches over 1,800 Cambridge Public Schools (CPS) students each year. During the school year, the program provides oral health education and oral hygiene bags to all students in first, third, sixth, and ninth grades. Parent oral health reference booklets are included in these bags.

Through a StoryWalk, staff taught first and third grade students how to care for their teeth during the school day. Hygienists engaged with sixth grade students during their health and wellness classes, discussing the importance of healthy teeth for a healthy body through topics such as pH levels in drinks, how a cavity forms, and how risk factors affect teeth.

In FY24, the program provided oral health screenings for all first, third, sixth, and ninth grade students at no cost to families to identify dental needs. In coordination with School Health Nurses and CPS Family Liaisons, all students identified with dental issues were connected with a dentist within the Cambridge community, including 48 students who needed urgent/emergency care.

The Cambridge Healthy Smiles Annual Water Bottle Initiative, in its fifth year, provided over 2,000 water bottles to CPS students and School Health Nurses. The program's slogan "Sip, Swish, Swallow" reminds students of the importance of drinking water throughout the day, including at school, to clean teeth and stay hydrated. The program also continued their Sports Mouth Guard Initiative for high school student athletes. Both initiatives were supported by the Charles Bullock Trust Fund for Children.

SUPPORT UNITS

CPHD HAS SEVERAL divisions that keep the department running and support its functions and services.

- The **Division of Financial and Contractual Operations** managed the department's FY24 budget and contractual planning, preparation, and monitoring. See the Financial Overview near the end of this report.
- The **Division of Operations and Administrative Services** worked tirelessly on day-to-day operations, provided administrative support at CHA Cambridge Hospital's Tuberculosis clinic, and helped organize CPHD's numerous vaccine clinics. The unit also managed the city's burial permits and permits for funeral directors. During FY24, the unit processed 665 burial permits and 5 permits for funeral directors.
- The **Division of Performance Management and Quality Improvement (PMQI)** is responsible for ensuring that CPHD maintains accreditation with the Public Health Accreditation Board (PHAB) as well as monitoring

departmental performance toward public health goals, improving processes and services, and developing and implementing the department's strategic plan.

In FY24, PMQI:

1. began managing the process to achieve PHAB re-accreditation;
 2. implemented a performance management system;
 3. began implementing the FY24-26 Strategic Plan;
 4. undertook implementing the FY24-26 Quality Improvement Plan.
- The **Communications and Marketing Division (Comms)** undertook a variety of activities ranging from responding to media inquiries to promoting CPHD programs, initiatives, and events. The unit also wrote 40 articles, numerous press releases, and over 600 social media posts to educate residents on such varied topics as mosquito-borne threats, water quality, food recalls, and respiratory illnesses.

The Comms team worked with Perkins Access, a group within Perkins School for the Blind, to evaluate the health department's website and make upgrades to maximize the site's accessibility to individuals with disabilities. The division also collaborated with the communications offices at Cambridge Health Alliance and the City of Cambridge to ensure consistency of messaging for the many communities served.





Community Health Improvement *Plan*

The City of Cambridge's Community Health Improvement Plan (CHIP) is a five-year blueprint that guides the health department and its partners in addressing the city's biggest health concerns. During its fourth year, the CHIP's priority area workgroups provided much-needed services and information to the Cambridge community. Activity highlights are listed on the right (including some described in more detail in the Our Work section).

COMMUNITY AND SOCIAL RESILIENCE

- The Municipal Vulnerability Preparedness Program Action Grant project, focused on increasing awareness and understanding of the overall impacts of climate change on health (completed by the Cambridge Community Corps);
- City of Cambridge Block Parties Initiative, which helps combat loneliness and build resilience in the community;
- Joint project with the Cambridge Commission for Persons with Disabilities focused on improving inclusion of and accessibility for people with disabilities;
- Grant-funded Water, Sanitation and Hygiene (WASH) Emergencies for People Experiencing Homelessness initiative to develop emergency preparedness plans for people who experience homelessness;
- Cambridge student trip to the Equal Justice Initiative's Legacy Museum in Montgomery, Alabama to educate students about the transatlantic slave trade and mass incarceration.

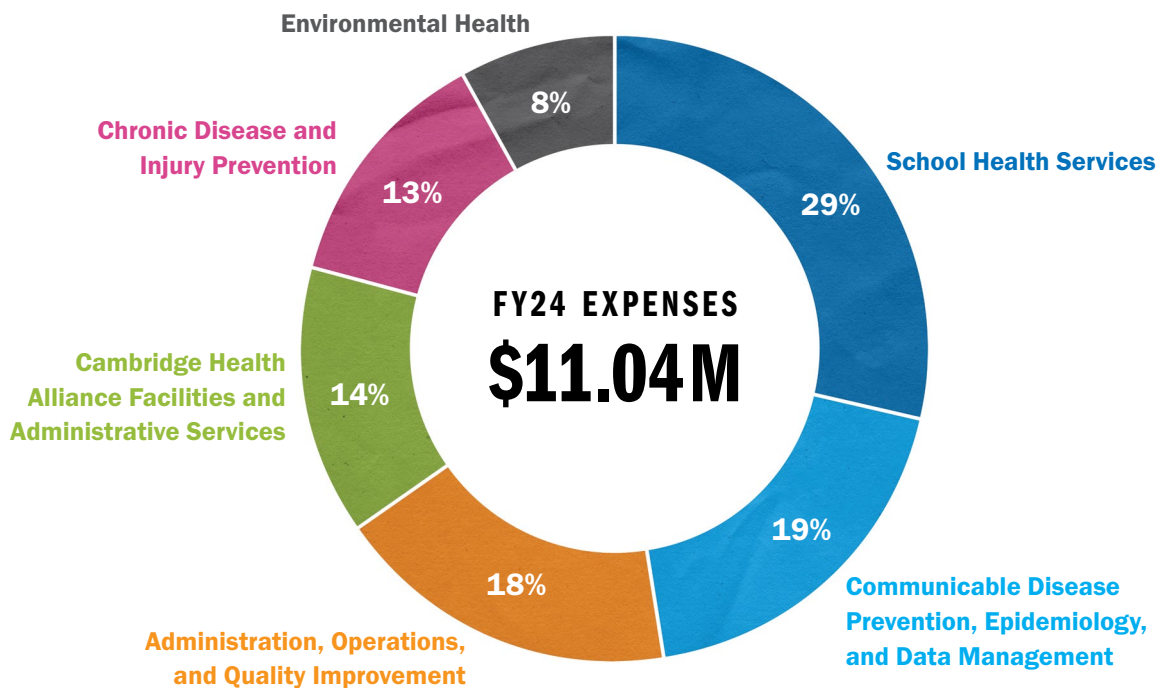
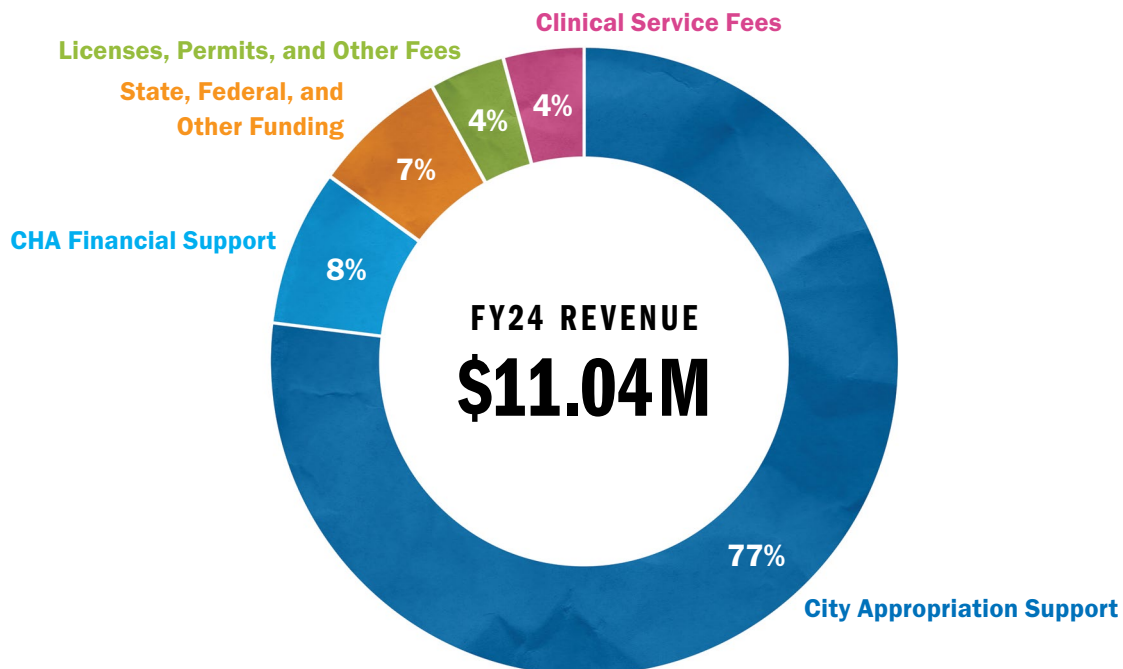
HEALTHY EATING AND ACTIVE LIVING (HEAL)

- Partnership with the Cambridge Community Foundation, Cambridge Economic Opportunity Committee, and other community organizations on the Food Access and Security Initiative, informed by the Food and Fitness Policy Council;
- Expansion of the Supplemental Nutrition Assistance Program (SNAP) Match to the Kendall Square Farmers Market;
- Participation of HEAL at farmers markets to educate about SNAP Match, hydration, hypertension, and more.

MENTAL HEALTH

- Provision of Adult and Youth Mental Health First Aid trainings for community providers;
- Development of a youth resources map specifically for mental health resources;
- Snack and chat sessions with middle schoolers at the Valente branch of the Cambridge Public Library, including intern work with the library to create student offerings to enhance social and emotional learning.

Financial *Summary*



Note: Percentages may not add up to 100% due to rounding.

Thank you to *our* partners



We are grateful for the many exceptional partners who worked with us. We appreciate their ongoing commitment to the health of Cambridge residents.

CITY OF CAMBRIDGE

Cambridge Public Schools
City Manager's Office
Commission on Immigrant Rights and Citizenship
Commission for Persons with Disabilities
Community Development Department
Conservation Commission
Council on Aging
Department of Human Service Programs
Department of Public Works
Family Policy Council
Fire Department
Food and Fitness Policy Council
Find It Cambridge
Human Rights Commission
Inspectional Services Department
Law Department
License Commission
LGBTQ+ Commission
Multi-Service Center
Office of Early Childhood
Participatory Budgeting
Peace Commission
Police Department
Public Library
Substance Use Advisory Council
Traffic, Parking, and Transportation Department
Water Department
Women's Commission

CAMBRIDGE HEALTH ALLIANCE

COMMUNITY PARTNERS

Access: Drug User Health Program
(AIDS Action Committee/Fenway Health)
Academic Public Health Volunteer Corps
Agassiz Baldwin Community
CASPAR/Bay Cove Human Services
Cambridge Black Pastors Alliance
Cambridge Community Center
Cambridge Community Foundation
Cambridge Housing Authority
Cambridge Volunteer Clearinghouse
Cambridge Economic Opportunity Committee
Cambridge & Somerville Healthcare
for the Homeless
Cambridge YMCA
Central Square Business Improvement District
Community Tracing Collaborative
East End House
First Church Cambridge
First Korean Church In Cambridge
Food For Free
Green Cambridge
Islamic Society of Boston
Just-A-Start Material Aid and Advocacy Program
Mass Farmers Markets
Massachusetts Department of Public Health
Margaret Fuller Neighborhood House
Mount Auburn Hospital
Pro EMS
Reservoir Church
Spaulding Hospital
Cambridge Salvation Army
YWCA Cambridge
Y2Y

UNIVERSITIES/AFFILIATES

Harvard University
Massachusetts Institute of Technology
Lesley University

Acknowledgments

YI-AN HUANG

City Manager
City of Cambridge

ASSAAD J. SAYAH, MD

Chief Executive Officer
Cambridge Health Alliance
& Commissioner of Public Health
City of Cambridge

DERRICK NEAL

Chief Public Health Officer
Cambridge Public Health Department
Cambridge Health Alliance
City of Cambridge

CAMBRIDGE CITY COUNCIL

Mayor E. Denise Simmons
Vice Mayor Marc C. McGovern
Councillor Burhan Azeem
Councillor Jivan Sobrinho-Wheeler
Councillor Patricia M. Nolan
Councillor Joan F. Pickett
Councillor Sumbul Siddiqui
Councillor Paul F. Toner
Councillor Ayesha M. Wilson

CAMBRIDGE PUBLIC HEALTH COMMITTEE

Paula Paris, Chair
Susan Breen
Katharine Kosinski, MD
Assaad J. Sayah, MD, ex officio
Ellen Semonoff

CAMBRIDGE PUBLIC HEALTH DEPARTMENT STAFF EDITORS

Rachel Heafield-Spaley
Dawn Baxter

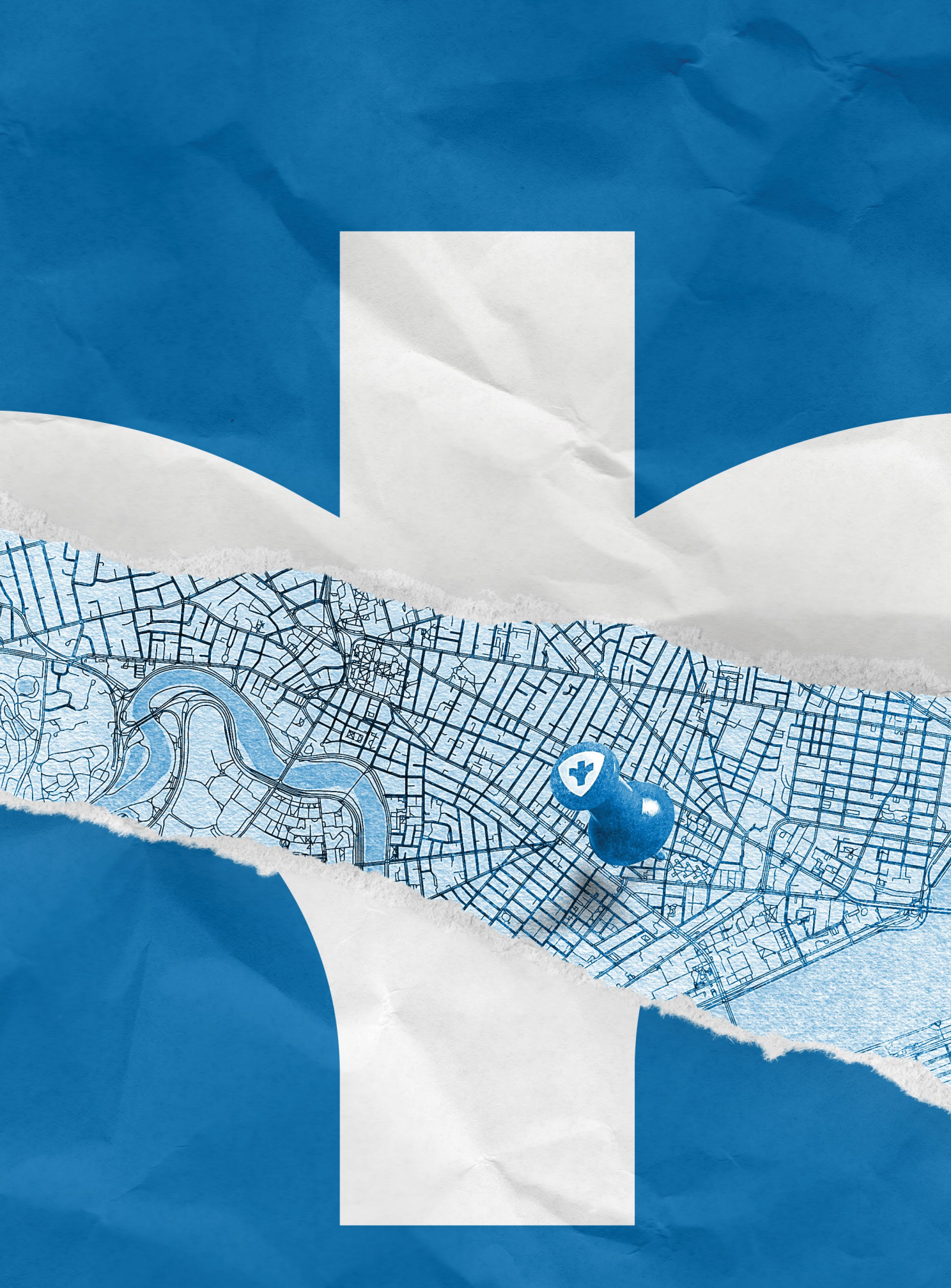
PHOTO CREDITS

Cambridge Public Health Department
Cambridge Police Department
Rachel Heafield-Spaley
Kyle Klein
David Oziel

DESIGN

Think Floyd, LLC







Cambridge
Public Health
Department



Cambridge Public Health Department is a city department administered by Cambridge Health Alliance,
a regional health care delivery system.

119 Windsor Street | Cambridge, MA 02139 | 617-665-3800 | cambridgepublichealth.org | [@CambHealth](https://twitter.com/CambHealth)

